



Project Memorandum

3117-M02

TO: Wayne Johnson
FROM: Harold Merck, Kirsten Barringer
DATE: October 24, 2016
PROJECT: 3117 Third Rail Studios
SUBJECT: Noise Criteria Follow-up Tests

This memo summarizes the follow-up tests that were conducted at Third Rail Studios in Atlanta, Georgia in October 2016. In order to determine whether the sound stage maintains sound levels at or below NC-25, a sound meter collected spectrum level and time history data from Friday, October 14 at 12 PM until Monday, October 17 at 2 PM. This time range was selected to capture peak air and traffic on Friday afternoon and Monday morning

Analysis of the data shows that sound levels are well below NC-25 more than 99% of the time, including some interfering noise levels, namely several entrances and exits from the studio by various personnel. Under controlled access, the in-studio levels will remain below NC-25 virtually at all times. Over the 74-hour measurement period, 24 noise event peaks were analyzed, with each lasting less than one minute. Of those 24 peaks, 14 events exceed NC-25. Of those 14 events, only 5 events exceed NC-25 in frequencies below 200Hz and are thought to originate outside the studio. The mid-frequency exceedances are likely those which originate inside and will be eliminated by controlled access on set. The low-frequency events that registered on the meter occurred less than 0.002% of the time.

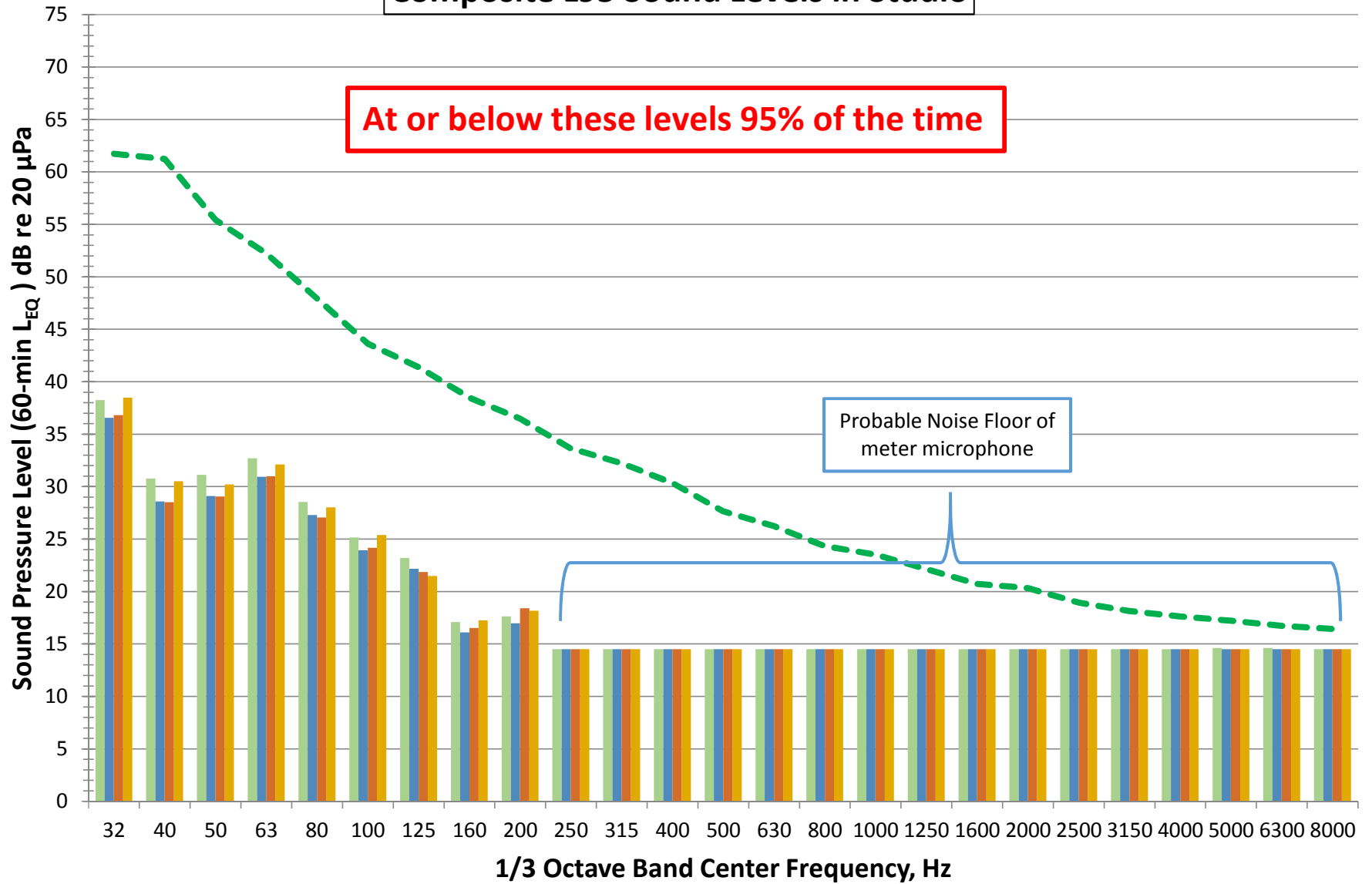
A short reading was also taken while the HVAC system was on inside the sound stage, and the resultant levels also remained below NC-25. The charted results are attached.

If you have questions regarding these findings, please do not hesitate to call our office.

(7 Charts)

Composite L95 Sound Levels in Studio

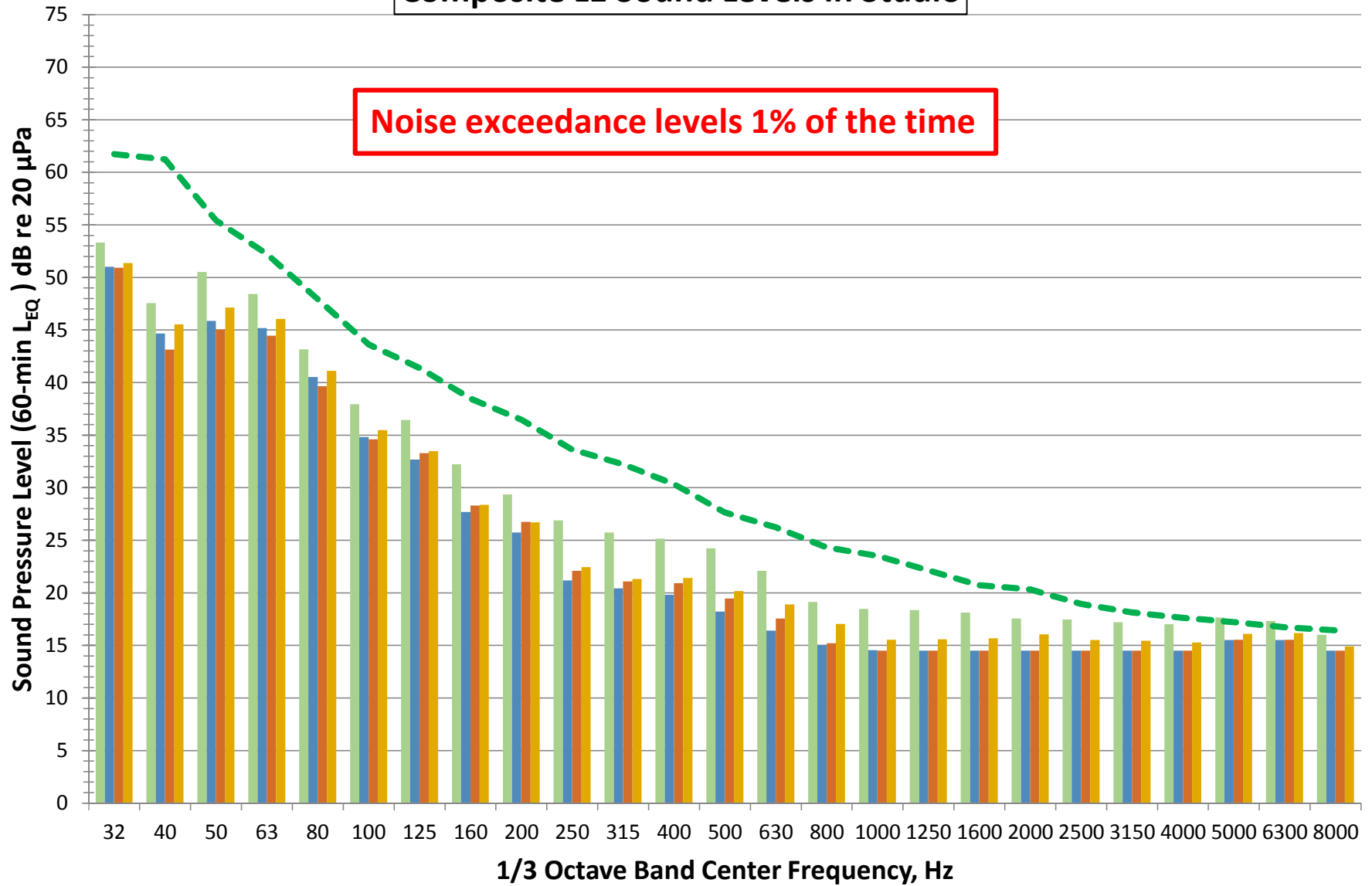
At or below these levels 95% of the time



Meas'd L95 Avg Friday Meas'd L95 Avg Saturday Meas'd L95 Avg Sunday Meas'd L95 Avg Monday NC-25 1/3 Octave

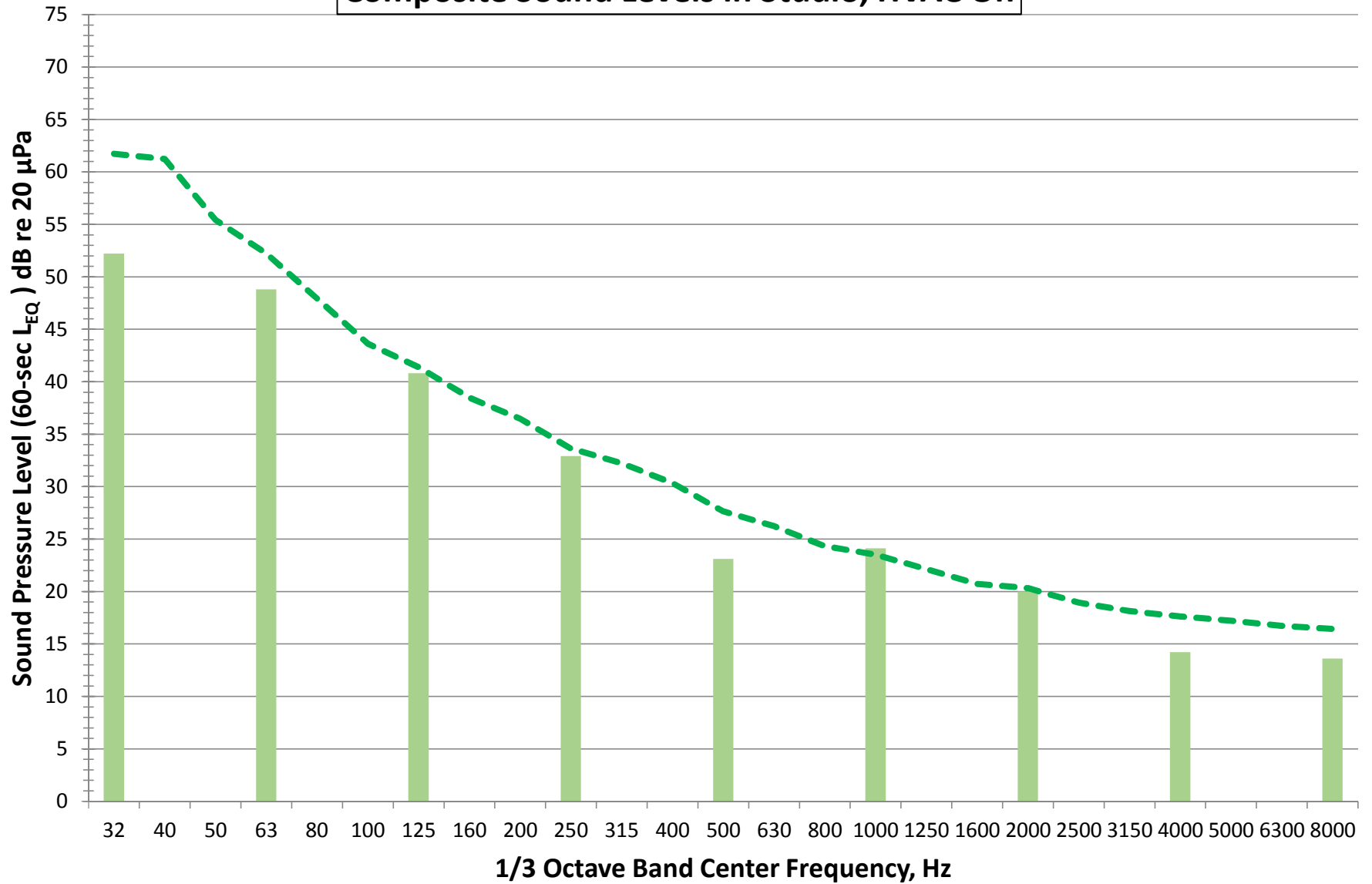
Composite L1 Sound Levels in Studio

Noise exceedance levels 1% of the time



Meas'd L1 Avg Friday Meas'd L1 Avg Saturday Meas'd L1 Avg Sunday Meas'd L1 Avg Monday NC-25 1/3 Octave

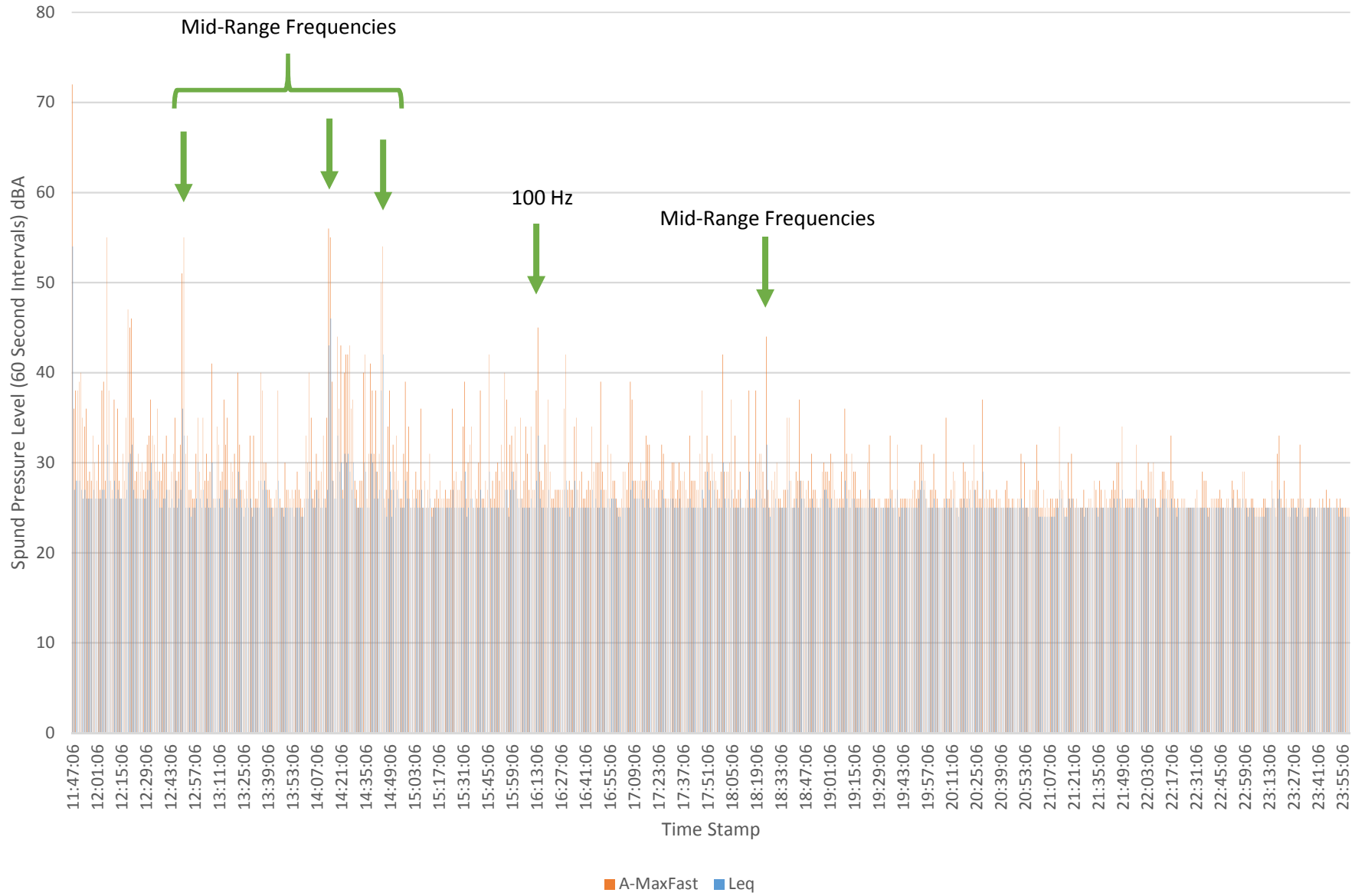
Composite Sound Levels in Studio, HVAC On



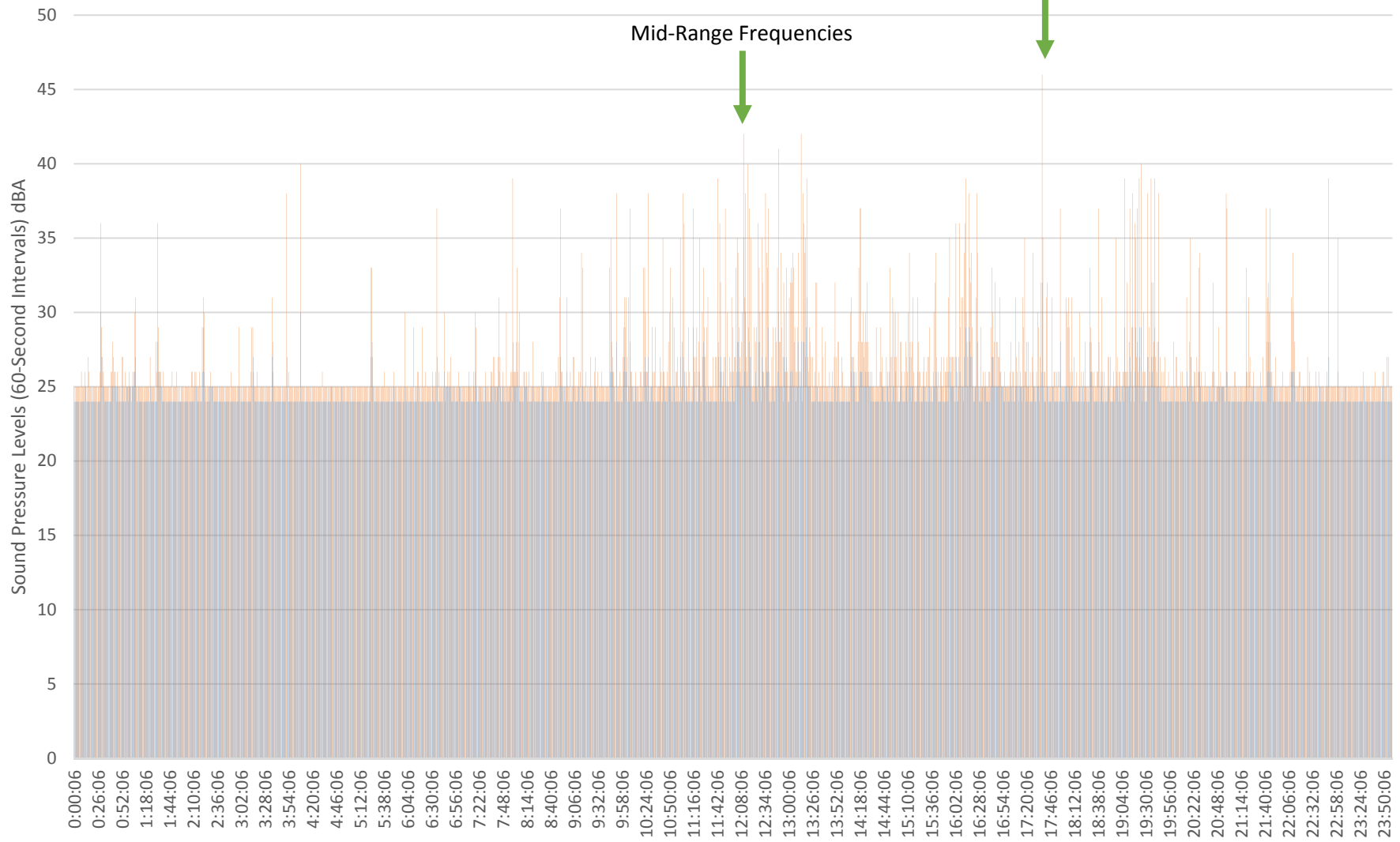
Leq 1/1 Oct

NC-25 1/3 Octave

Time History and NC-25 Exceedances Friday 10/14/2016



Time History and NC-25 Exceedances Sat 10-15-2016

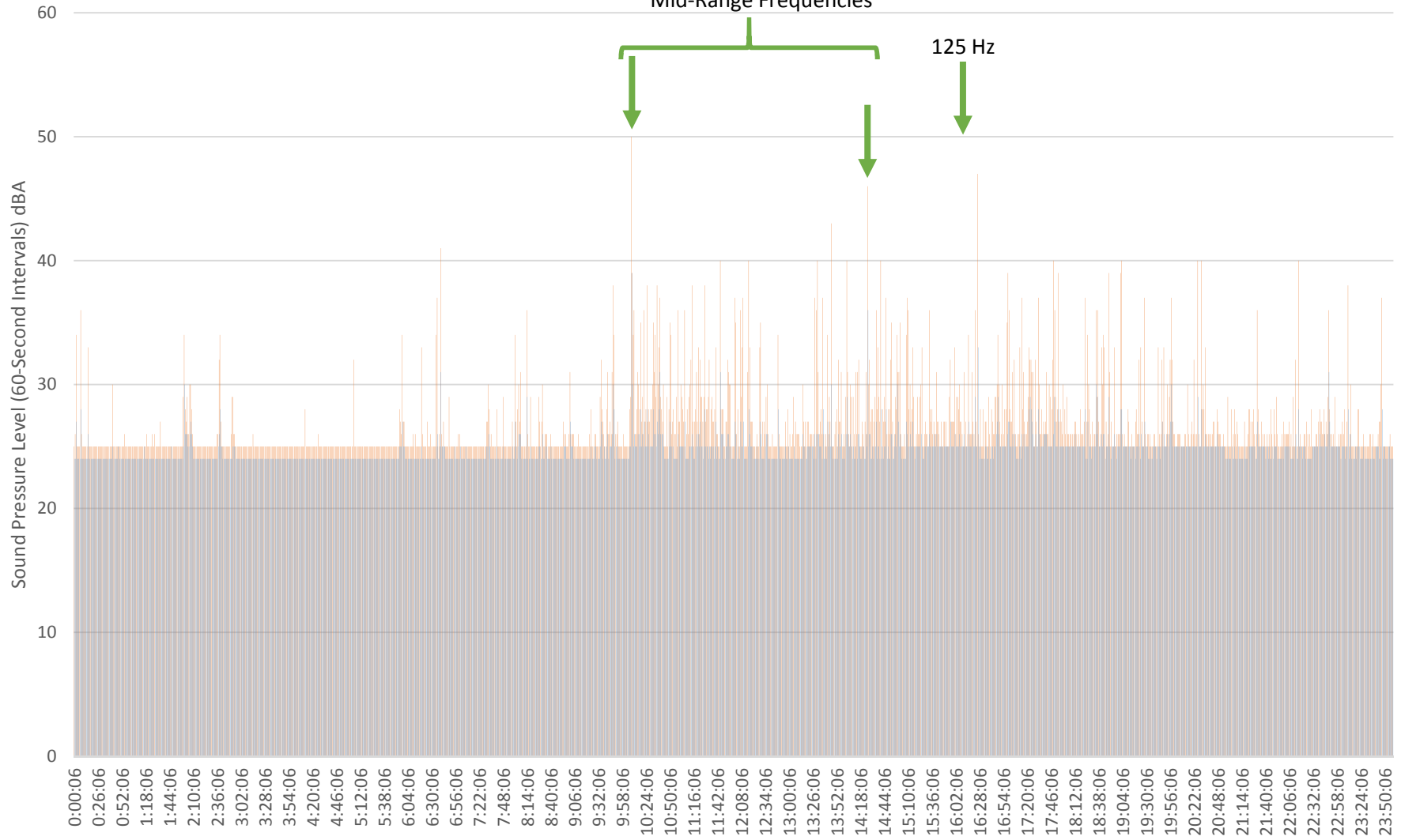


■ A-MaxFast ■ Leq

Time History and NC-25 Exceedances

Sun 10-16-2016

Mid-Range Frequencies



A-MaxFast Leq

Time History and NC-25 Exceedances Mon 10-17-2016

